

# Gray Leafspot on St. Augustinegrass

Prepared by  
Camille Goodwin, MG 2008

Texas AgriLife Extension Service  
Galveston County Office  
Dickinson, TX 77539



Educational programs of the Texas AgriLife Extension Service are open to all people without regard to race, color, sex, disability, religion, age, or national origin.

The Texas A&M System, U.S. Department of Agriculture and the County Commissioners Courts of Texas cooperating.



FIG. 1

Disease Pathogen Name: *Piricularia grisea*

Pathogen Type: Fungus

Period of Primary Occurrence: May through September

- Late spring and summer when weather is warm, humidity high and moisture is plentiful

Plants Affected

- Grasses such as St. Augustinegrass, perennial ryegrass, bermudagrass, fescues, and centipedegrass

Identifying Characteristics

- Oval, oblong or circular tan colored lesions with brown or purplish borders on leaf blades of St. Augustinegrass (Fig. 1-4)
- More troublesome on grass growing in shaded areas

Description / Symptoms

- Lesions develop on leaf sheaths and stems and the leaves wither and die
- Serious thinning of St. Augustinegrass occurs under severe disease levels
- Loss of lawn may occur under severe disease levels

Best Management Practices (BMP)

**NON-CHEMICAL CONTROL**

- Maintain healthy vigorous turfgrass
- Avoid applications of rapid-release nitrogen fertilizers on moderately shaded lawns in summer (use slow release form of nitrogen)
- Irrigate lawn in early morning only, when water is needed
- Catch grass clippings in lawns where gray leafspot is a problem



FIG. 2

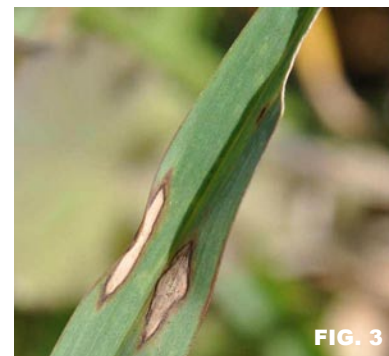


FIG. 3



FIG. 4

## CHEMICAL CONTROL

- Apply preventative fungicides that are labeled for grayleaf spot control such as Daconil, myclobutanil (Spectracide Immunox, and Greenlight Fung-Away Systemic Granules), propiconazole (Ferti-lome Systemic Fungicide, Ortho Lawn Disease Control, Bannar Maxx), and thiophanate-methyl (FungAway Systemic)

The information given herein is for educational purposes only. Reference to commercial products or trade names is made with the understanding that no discrimination is intended and no endorsement by the Texas AgriLife Extension Service is implied.

Use pesticides only according to the directions on the label. Individuals who use chemicals are responsible for ensuring that the intended use complies with current regulations and conforms to the product label. If the information does not agree with current labeling, follow the label instructions. The label is the law.

Always remember to read and heed six of the most important words on the label: "KEEP OUT OF REACH OF CHILDREN"

All images are copyrighted by the Galveston County Master Gardener Association (GCMGA).  
These images are for educational use only and may not be used for commercial or non-educational purpose without written permission from GCMGA.

**Texas AgriLife Extension Service • Galveston County Office • 5115 Highway 3 • Dickinson, TX 77539  
281-534-3413 • <http://aggie-horticulture.tamu.edu/galveston>**