

Using Plant Textures, Forms, & Colors
HORT 308 Spring 2012



All text & images are copyrighted, unless otherwise indicated, by:
 Dr. Michael A. Arnold
 Texas A&M University
 Dept. Horticultural Sciences
 College Station, TX 77843-2133



Textural Considerations: Coarse

Coarse textured plants grab your attention = focal points



Textural Considerations: Fine

• Fine textures can be used to soften harsh lines & highlight coarser textured plants by contrast



Changing 3-Dimensionality With Color

- Bright colors draw the eye, bring plants to the foreground
- Darker colors (blues, purples, violets) provide illusion of depth



**Creating Space Illusion:
 Horizontal Plants**



**Creating Space Illusion:
 Vertical Plants**



Formal versus Informal



Formal: Texas Capital Grounds



Informal: Texas Cottage Garden



Formal: Structured Water Garden



Informal: Naturalistic Pond

Naturalizing



Naturalistic plantings ≠ native plants

Wildflower Meadows

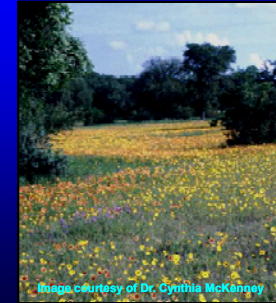
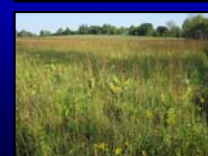


Image courtesy of Dr. Cynthia McKeeney



Specialty Designs / Logos



Warm season annuals



Cold season flowering annuals



Cold season vegetative annuals



Knot Garden / Parterres



Containers Gardens



Hanging Baskets & Window Boxes



Topiaries



Rock Garden



Green Roofs

Regional challenges



Framing Views (Outdoors)



Framing Views (Inside Out)



Reflections
(Mirror Imaging)



All material represented herein are copyrighted by the author, or otherwise as indicated, with all rights reserved.

For permission to reproduce text or images from this presentation write:

Dr. Michael A. Arnold

Dept. of Horticultural Sciences

Texas A&M University

College Station, TX 77843-2133

email ma-arnold@tamu.edu