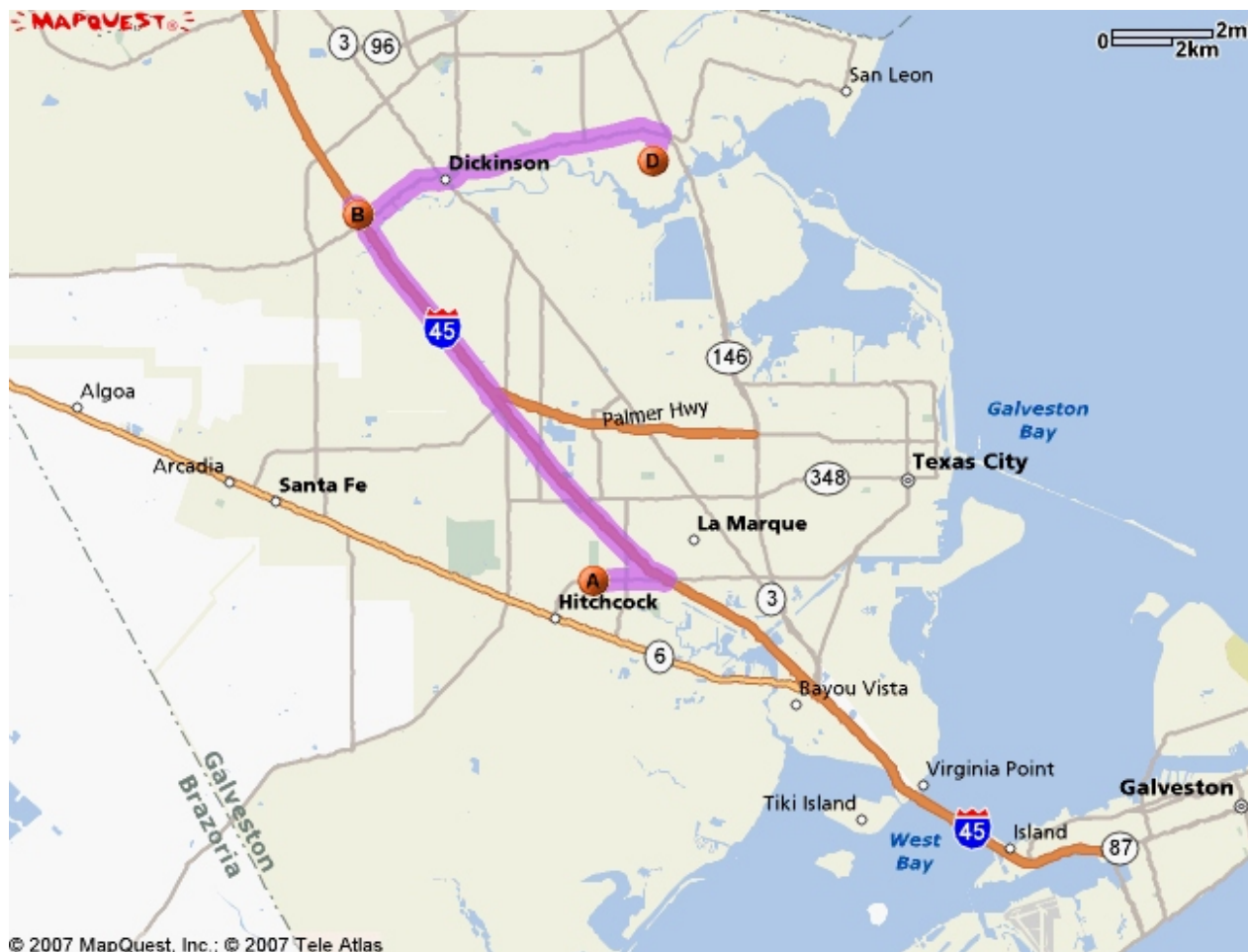
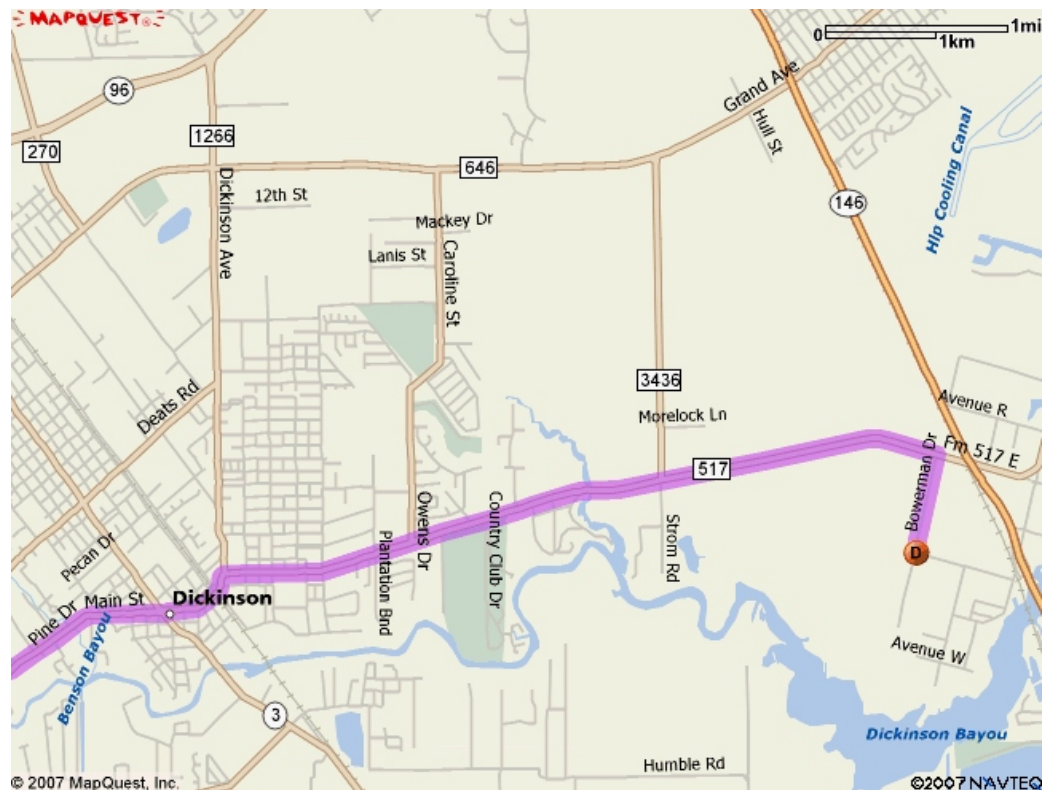


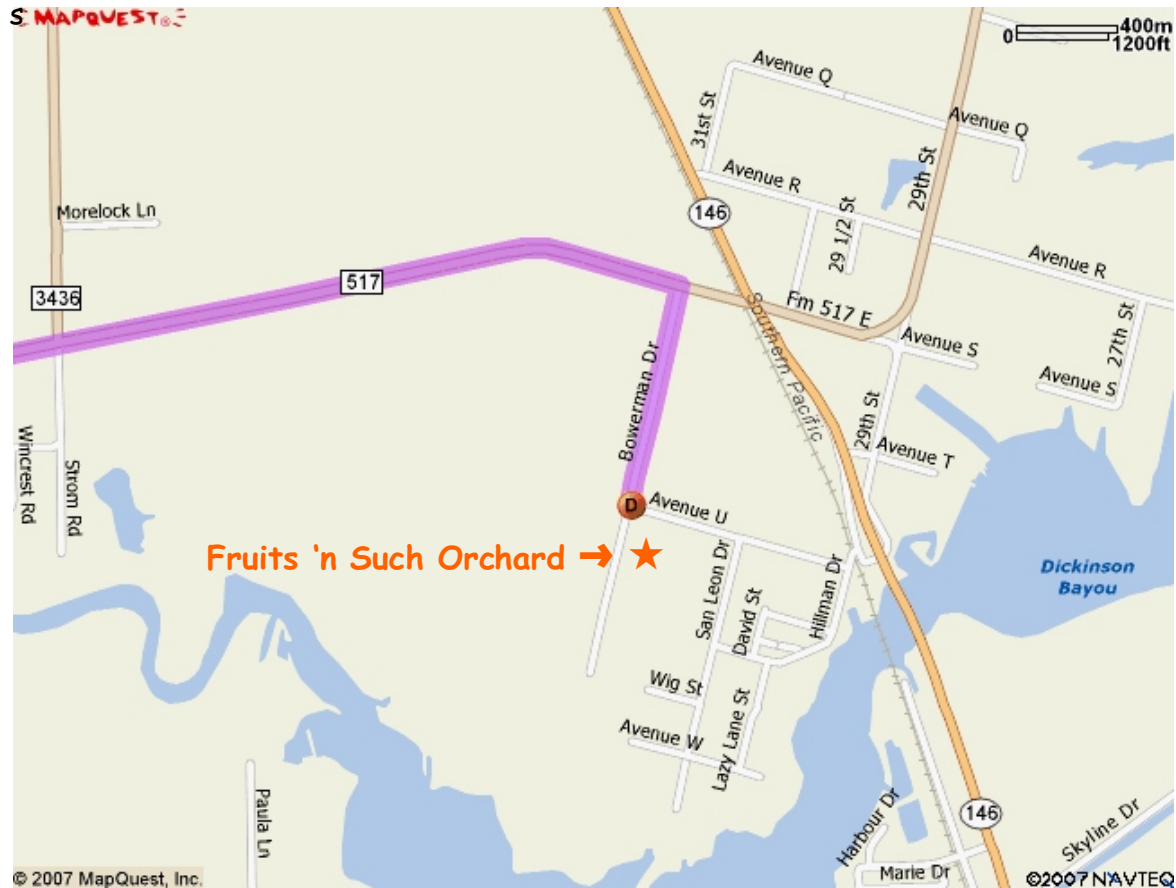
Area map with both tour site locations shown ("A" is Carbide Park; "B" is FM 517 & Gulf Freeway Exit #19 (for travel reference); "D" is Fruits 'n Such Orchard)



City wide map to Fruits 'n Such Orchard (see reverse page)



Street map to Fruits 'n Such Orchard



Fruits 'n Such Orchard Phone: 832-443-6733

Coming from Texas City: Go north on Hwy. 146 about 5 miles to FM 517 (signal lights). Turn left onto FM 517 and travel about 1/10 mile and turn left onto **Bowerman Drive** (first street from Hwy. 146).

Coming from Dickinson: Coming from FM 517 and the Gulf Freeway (Exit #19) and traveling east on FM 517, cross Hwy. 3, and travel until reaching the last street on the right before coming to the signal lights at Hwy. 146. Turn right onto the last street which is **Bowerman Drive**.

Coming from Clear Lake: Travel south on Hwy. 146 to FM 517 (signal lights). Turn right onto FM 517, travel about 1/10 mile until reaching the first street on the left side (Bowerman Drive). Turn left onto **Bowerman Drive**.

After entering Bowerman Drive from FM 517: Travel $\frac{1}{2}$ mile on Bowerman Drive, cross Avenue U, and the Fruits 'n Such Orchard is located just pass the brick home on the left side. Bowerman Drive is paved for about $\frac{1}{2}$ mile (up to the intersection of Bowerman Drive and Avenue U). After crossing Avenue U, Bowerman Drive is shell based.